



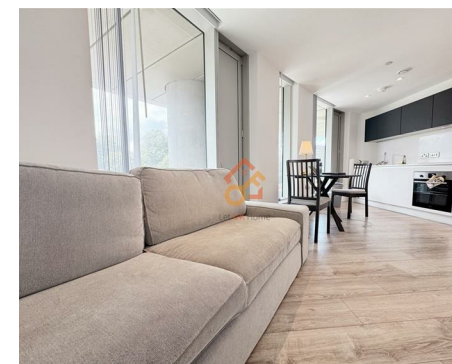
Let **UK** Home

**2 Bedrooms**

**Flat**

**Located  
in Manchester**

**£2,000 Per Month**



[pmadmin@letukhome.co.uk](mailto:pmadmin@letukhome.co.uk)

<https://www.letukhome.co.uk/>

01615219812



# 11 Silvercroft Sreet Manchester

M15 4ZP



Let UK Home are excited to offer this stunning 2 bedroom apartment in Three60, the cylindrical skyscraper in Manchester.

This property comprises a large bright open plan kitchen and living room, two double bedrooms with wardrobes, a large family sized bathroom and ample storage.

Residents of the development will have access to concierge, private gym & spa, residents lounge & private meeting/dining rooms.

The development is surrounded by many prestigious universities and rich educational resources. Internationally renowned institutions such as the University of Manchester (UOM), Manchester Metropolitan University (MMU) and the Royal Northern College of Music (RNCM) are all within walking distance.

The closest train station to the property is Deansgate station which is just a few minutes walk from Three60. Manchester Piccadilly Station and Manchester Oxford Road station are both within walking distance of the development.

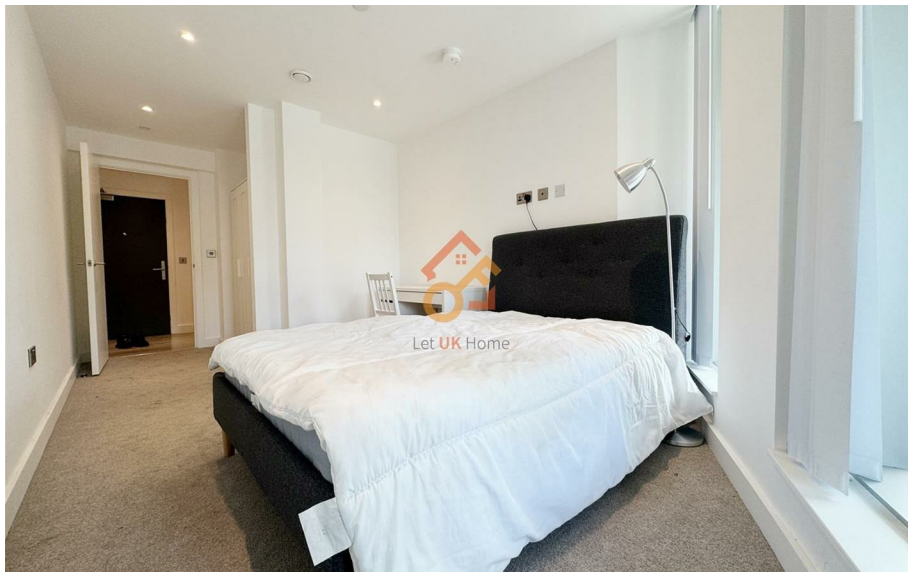
Right at your doorstep, you can enjoy bustling restaurants, bars, and the picturesque Castlefield canal walk. This development is adjacent to Deansgate commercial street, along which you will find famous locations such as the John Rylands Library, Beetham Tower ( a landmark), Manchester Cathedral, and Selfridges department store, with numerous well-known shops, providing one-stop options for dining, drinking, and entertainment. The surrounding area has multiple

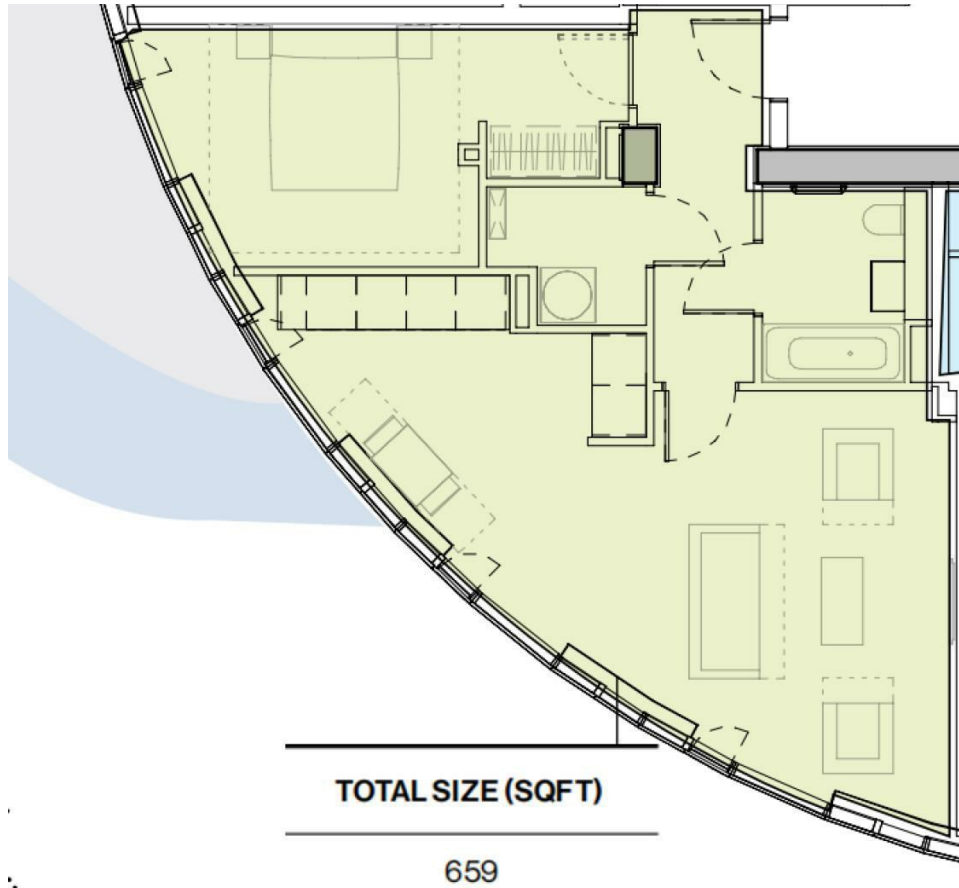
# 11 Silvercroft Sreet Manchester

£2,000 Per Month



- 2nd Floor
- 24h Security
- Yoga Room
- Co-working Space
- Private Dining Room
- Concierge Service
- The Gym
- Sauna & Steam Room
- Residents Lounge
- EPC Rating: B





Let **UK** Home

1/F, St James Tower 7 Charlotte  
Street  
Manchester  
M1 4DZ

01615219812

[padmin@letukhome.co.uk](mailto:padmin@letukhome.co.uk)

**Council Tax Band: C**

**Local Authority:**

Agents Note: Whilst every care has been taken to prepare these particulars, they are for guidance purposes only. All measurements are approximate and are for general guidance purposes only and whilst every care has been taken to ensure their accuracy, they should not be relied upon and potential buyers/tenants are advised to recheck the measurements.

Energy Efficiency Rating		Current	Potential
<i>Very energy efficient - lower running costs</i>			
(92 plus) <b>A</b>			
(81-91) <b>B</b>		82	82
(69-80) <b>C</b>			
(55-68) <b>D</b>			
(39-54) <b>E</b>			
(21-38) <b>F</b>			
(1-20) <b>G</b>			
<i>Not energy efficient - higher running costs</i>			
<b>England &amp; Wales</b>		EU Directive 2002/91/EC	

<https://www.letukhome.co.uk/>